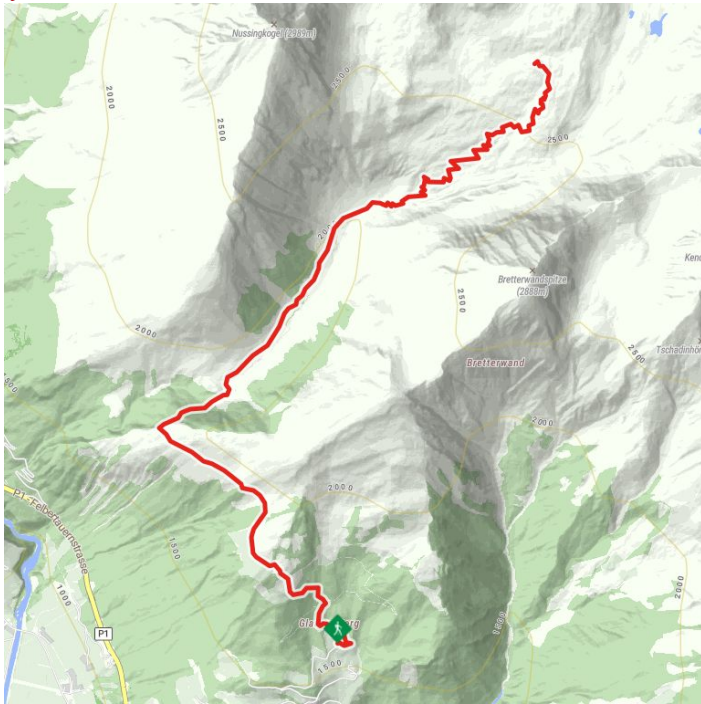
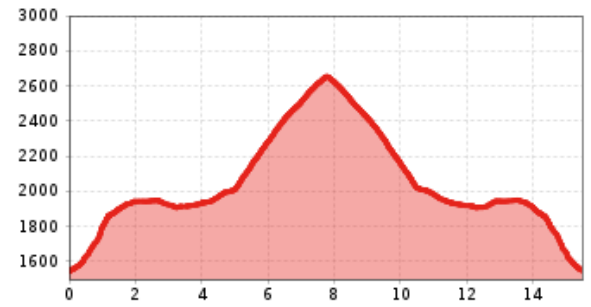


# Hiking tour to Sudetendeutschen Hütte 2.650m



## Höhenprofil



## The most important at a glance

distance 15.5 km	altitude meters uphill 1200 m	altitude meters downhill 1200 m	walking time uphill 4 h
walking time downhill 3 h	total walking time 7 h	highest point 2650 m	difficulty average

fitness: \* \* \* \* \*

technique: \* \* \* \* \*

public transport:

parking: Matri i. O. Mittelschule

starting point: Parking place Glanz  
destination point: Parking place Glanz  
best season: JUN, JUL, AUG, SEP

## arrival

Car park  
Car park Stein 1.340m

## hut/alpine hut

[Sudetendeutsche Hütte 2.650m](#) closed

## Gpx file

[download>](#)

## Interactive map

[open>](#)

## Beschreibung

?The starting point of this demanding hike is the parking place Glanz. From there, follow either the wide road or the somewhat steeper forest path. Then walk across the so-called Edelweißwiese and stay on the same path to reach the hut Äußere Steiner Alm. From the Äußere Steiner Alm, take the marked trail towards the hut Sudetendeutsche Hütte, which first leads over a flat valley floor and then over steeper terrain. The trail continues along the stream Steinerbach until the terrain becomes somewhat flatter again. Soon you are greeted by the imposing mountain range Granatspitzgruppe with its magnificent mountain peaks. The hut Sudetendeutsche Hütte, embedded in this group, is already in view at this point.