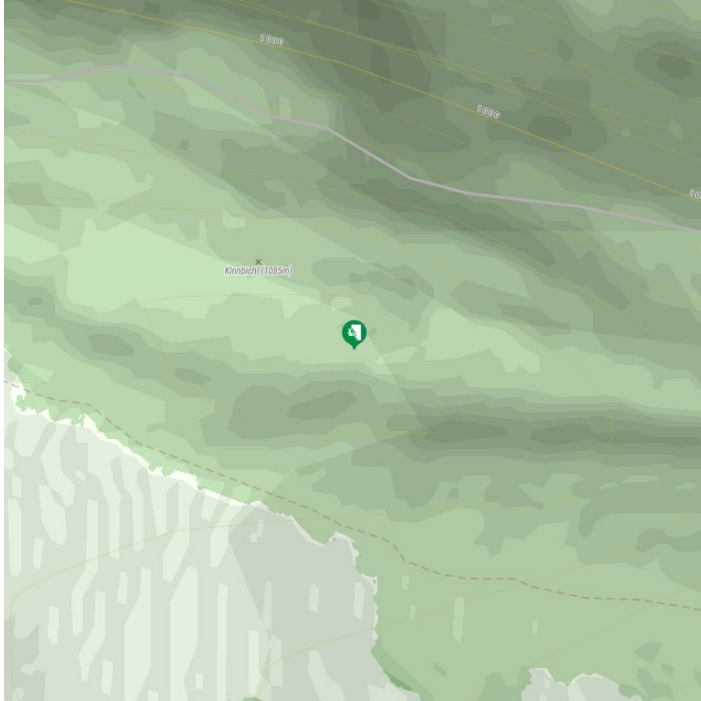


Recently upgraded climbing crag close to the town with about 200 routes in total.



The most important at a glance

number of routes
184

sea level starting point
1050 m

exposition
S

walking time access min.
2 min

walking time access max.
15 min

recommended for families
no

state: closed

Gestein:	lime
access:	2 bis 15 Min.
number of routes at the third difficulty level:	3
number of routes at the fourth difficulty level:	11
number of routes at the fifth difficulty level:	14
number of routes at the sixth difficulty level:	22
number of routes at the seventh difficulty level:	50
number of routes at the eighth difficulty level:	34
number of routes at the ninth difficulty level:	19

Gpx file

Interactive map

[download>](#)

[open>](#)

Description

11 new sectors with 191 routes in difficulty level IV+-IX+. New pitches; refreshment stops and overnight stay in Gasthof Kreithof possible.

Difficulty: IV+-IX+

Sealevel: 1.040 m

Orientation: S

Rock: Limestone

Sektoren/Routen: 11 / 191

Steepness: mostly vertical to slightly overhanging

Climbing: wallclimbing, mainly on edges, good technique demanded

Belaying: well - bolts

Wall height: 8 – 25 m

In case of rain climbing not possible!

Ideal period: march - october

Rock is drying quite rapidly

Way there: 3 – 25 min.

Hint: Private territory! Keep to the declared paths

Topos

